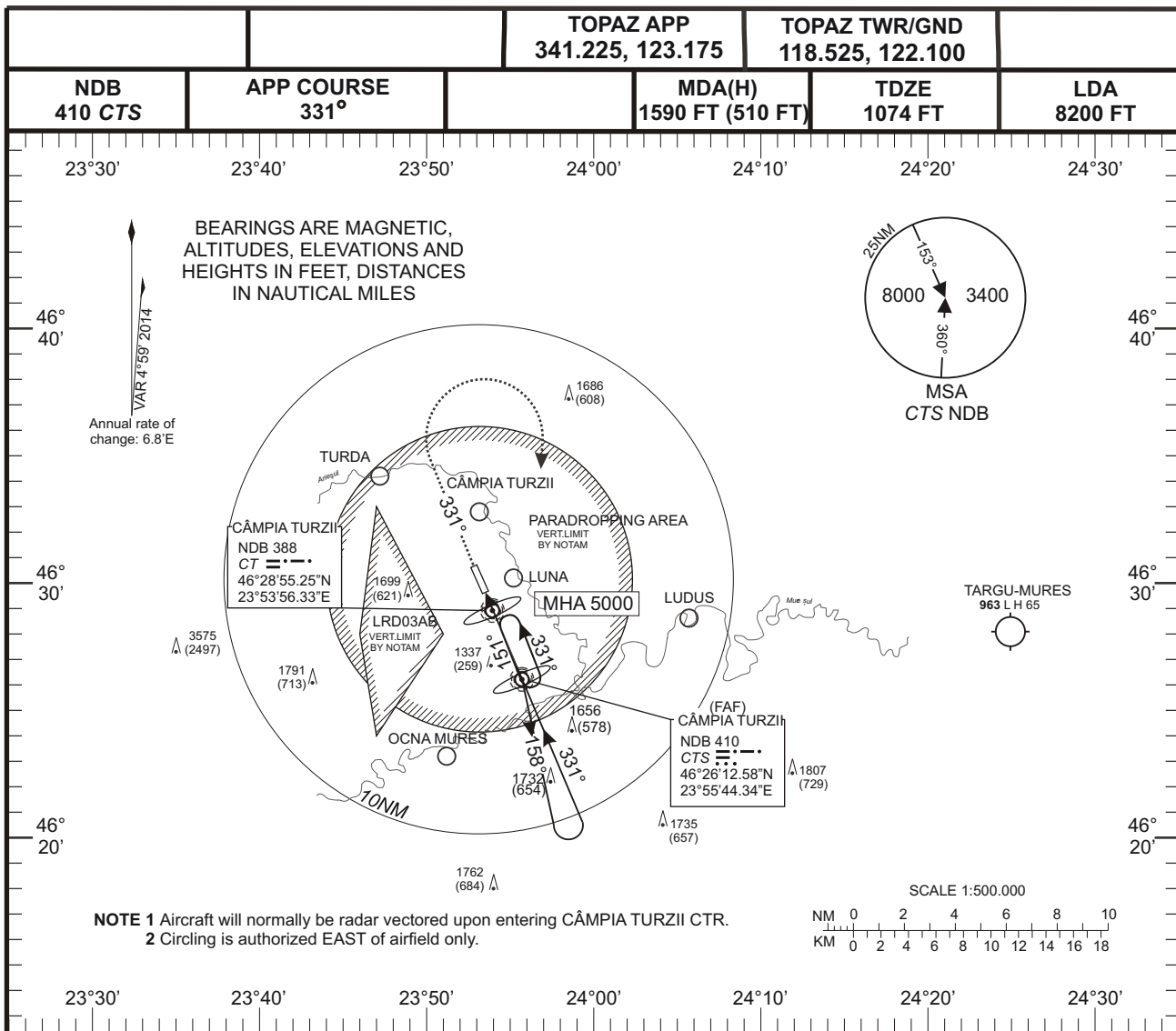


**CÂMPIA TURZII (LRCT)**

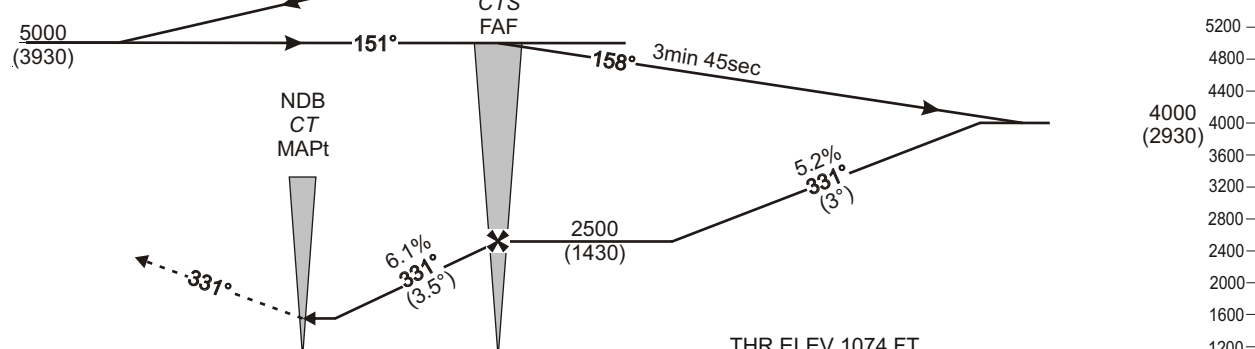
**AERODROME ELEV 1078 FT**  
HEIGHTS RELATED TO THR. ELEV.1074 FT

**NDB RWY 33**  
**CAT A/B**

**INSTRUMENT APPROACH CHART**



**MISSED APPROACH**  
Climb RWY heading to 2000 FT QNH then turn RIGHT to CTS climbing 5000 FT QNH and hold or as directed.



THR ELEV 1074 FT  
NM to/ from THR RWY33

|                 |        |      |      |      |      |      |      |
|-----------------|--------|------|------|------|------|------|------|
| Ground speed    | kts    | 70   | 90   | 100  | 130  | 160  | 180  |
| FAF - MAPt 3NM  | min:s  | 2:34 | 2:00 | 1:48 | 1:23 | 1:07 | 1:00 |
| Rate of descent | ft/min | 355  | 457  | 507  | 660  | 812  | 913  |

| CAT | NDB        |      | VM(C)      |      |
|-----|------------|------|------------|------|
|     | MDA(H)     | VIS  | MDA(H)     | VIS  |
| A   | 1590 (510) | 1600 | 1840 (760) | 1600 |
| B   |            |      | 1840 (760) |      |

**CÂMPIA TURZII (LRCT)  
NDB RWY 33 CAT A/B**

**AERONAUTICAL DATA TABULATION**

| <b>Fix/Point</b>                           | <b>Coordinates</b>                  |
|--|-------------------------------------|
| <b>CTS NDB (IAF)</b>                       | <b>46°26'12.58"N 023°55'44.34"E</b> |
| <b>FAF - CTS NDB</b>                       | <b>46°26'12.58"N 023°55'44.34"E</b> |
| <b>MAPt - CT LM</b>                        | <b>46°28'55.25"N 023°53'56.33"E</b> |
| <b>THR RWY 33</b>                          | <b>46°29'31.73"N 023°53'33.24"E</b> |
| <b>Final approach descent angle: -3.5°</b> |                                     |